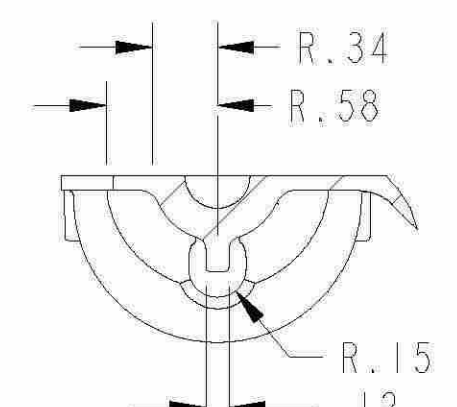
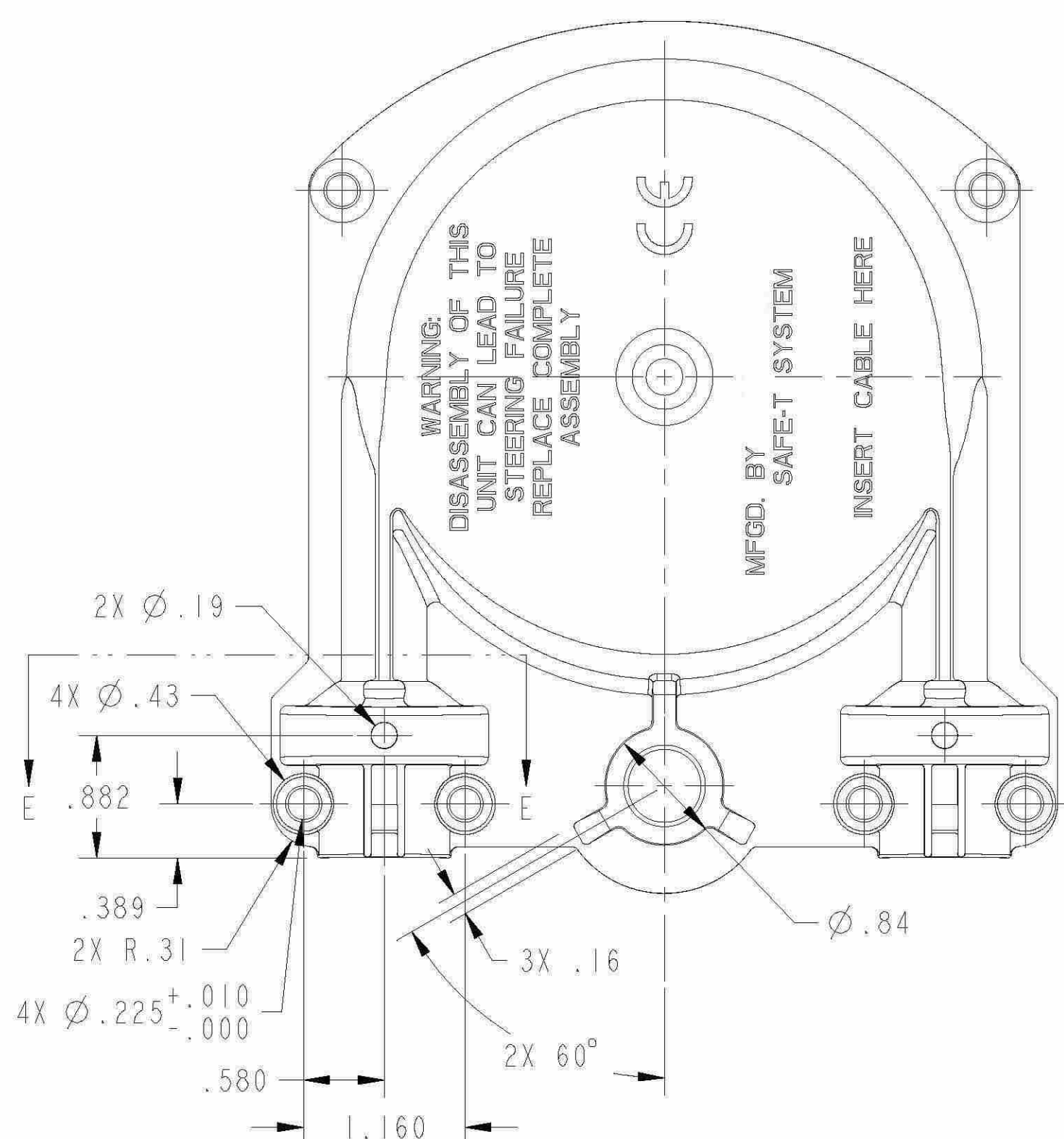


SCALE 0.5

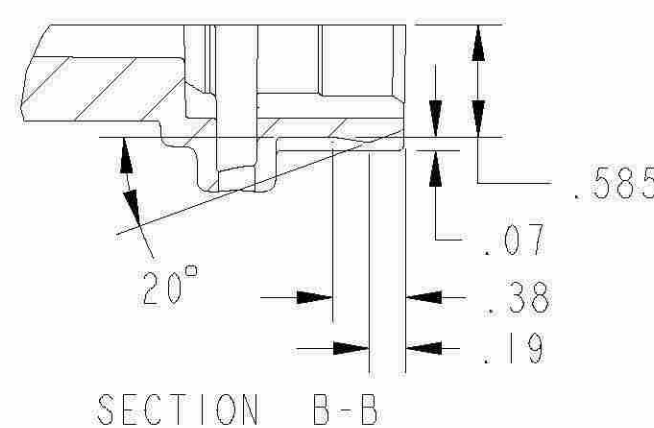


SECTION E-E
TYPICAL OF 2 PLACES

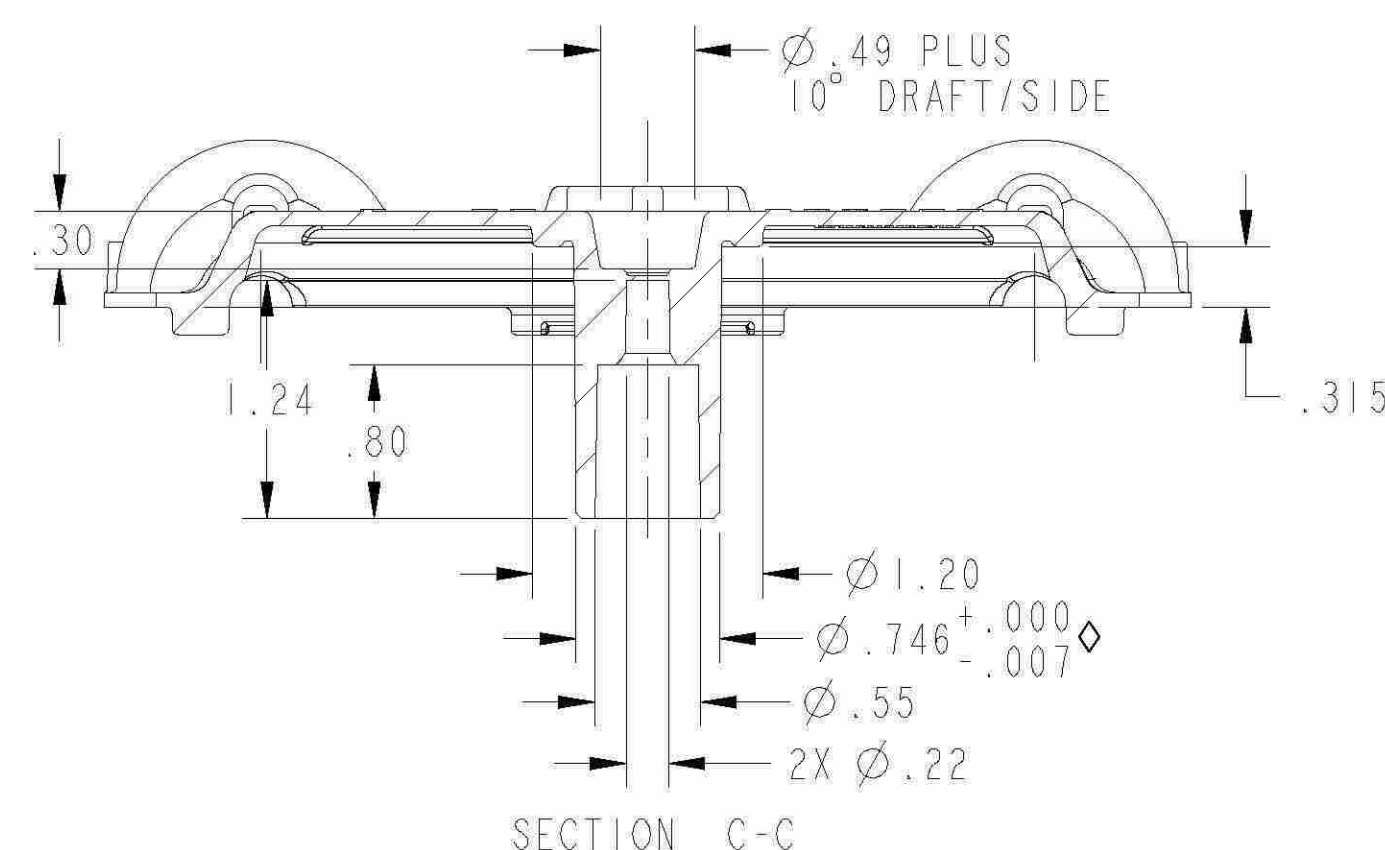


NOTES:

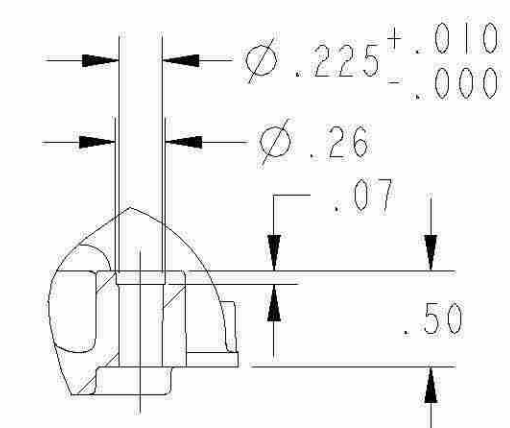
1. MATERIAL: ASTM B86 AC41A (ZAMAK 5)
2. PART AND TOOL TO BE MANUFACTURED PER ELECTRONIC MODEL 7608010.PRT.
3. PARTING LINE MISMATCH .004 MAX, NADCA FINE GRADE.
4. SURFACE FINISH TO BE NADCA CLASS 3, COMMERCIAL GRADE.
5. RADIi TO BE .06 UNLESS OTHERWISE SPECIFIED.
6. THIS PART MUST ALIGN WITH AND FIT ASSOCIATED PART 7608009.
7. GATE AND RISER LOCATIONS TO BE APPROVED BY
8. EJECTOR PIN PADS TO BE FLUSH TO .015 DEPRESSED. EJECTOR PIN LOCATIONS TO BE APPROVED BY
9. WALL THICKNESS TO BE .075 THRU-OUT EXCEPT AS NOTED.
10. PART NUMBER TO APPEAR IN APPROXIMATE LOCATION. CHARACTERS TO BE .10 ±.01 TALL, RAISED .015 ±.005. REMOVABLE INSERT.
11. DATE CODE TO APPEAR IN APPROXIMATE LOCATION. FORMAT FOR DATE CODE TO BE APPROVED BY
12. PARTS TO BE CLEAN WITH NO BURRS, CONTAMINANTS OR CORROSION. FLASH TO BE TRIMMED PER NADCA COMMERCIAL TRIMMING.
13. SUPPLIER MUST PROVIDE CERTIFIED MATERIAL TEST REPORT INCLUDING CHEMICAL ANALYSIS WITH EACH SHIPMENT.
14. PART VOLUME: 5.205 IN³



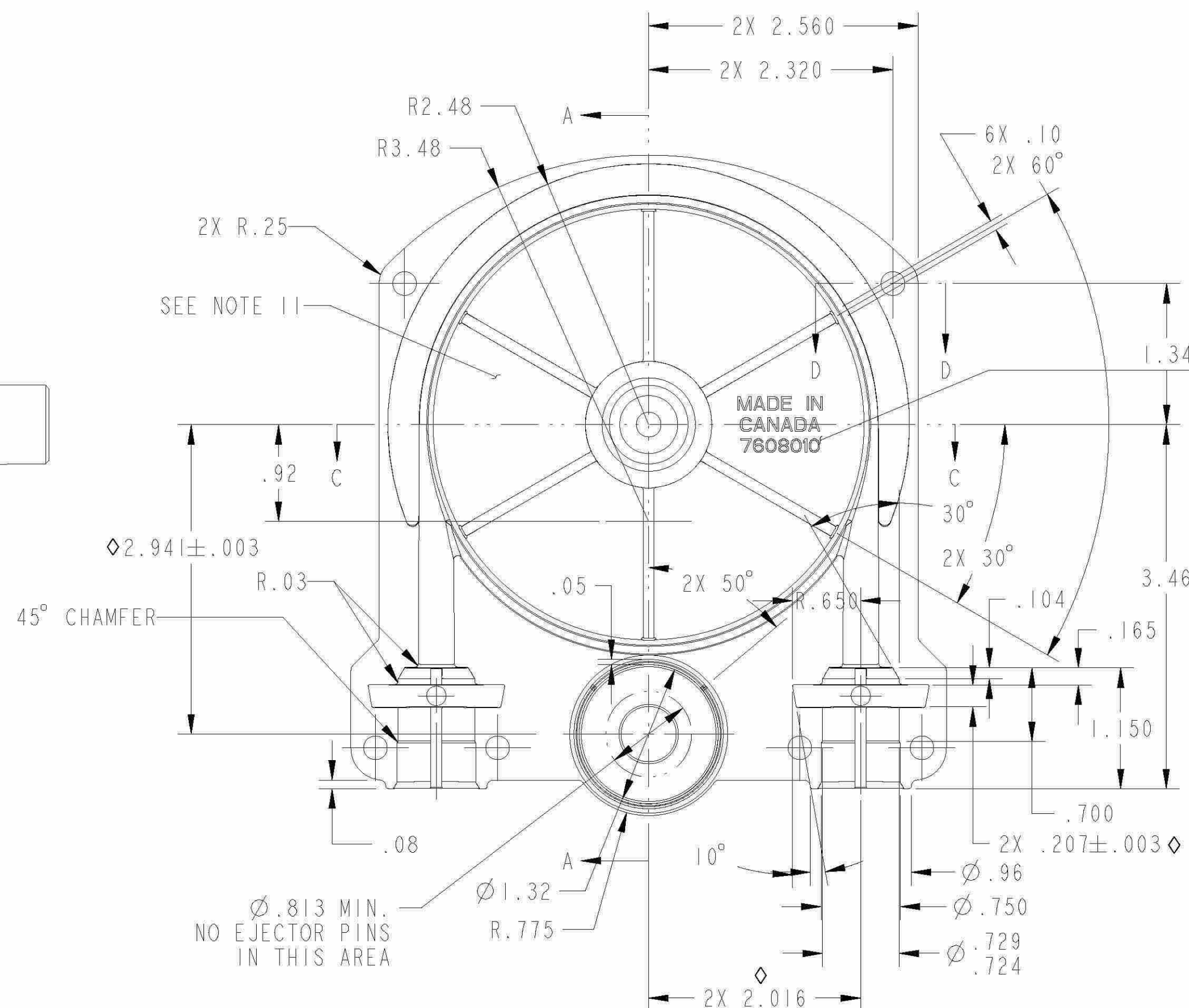
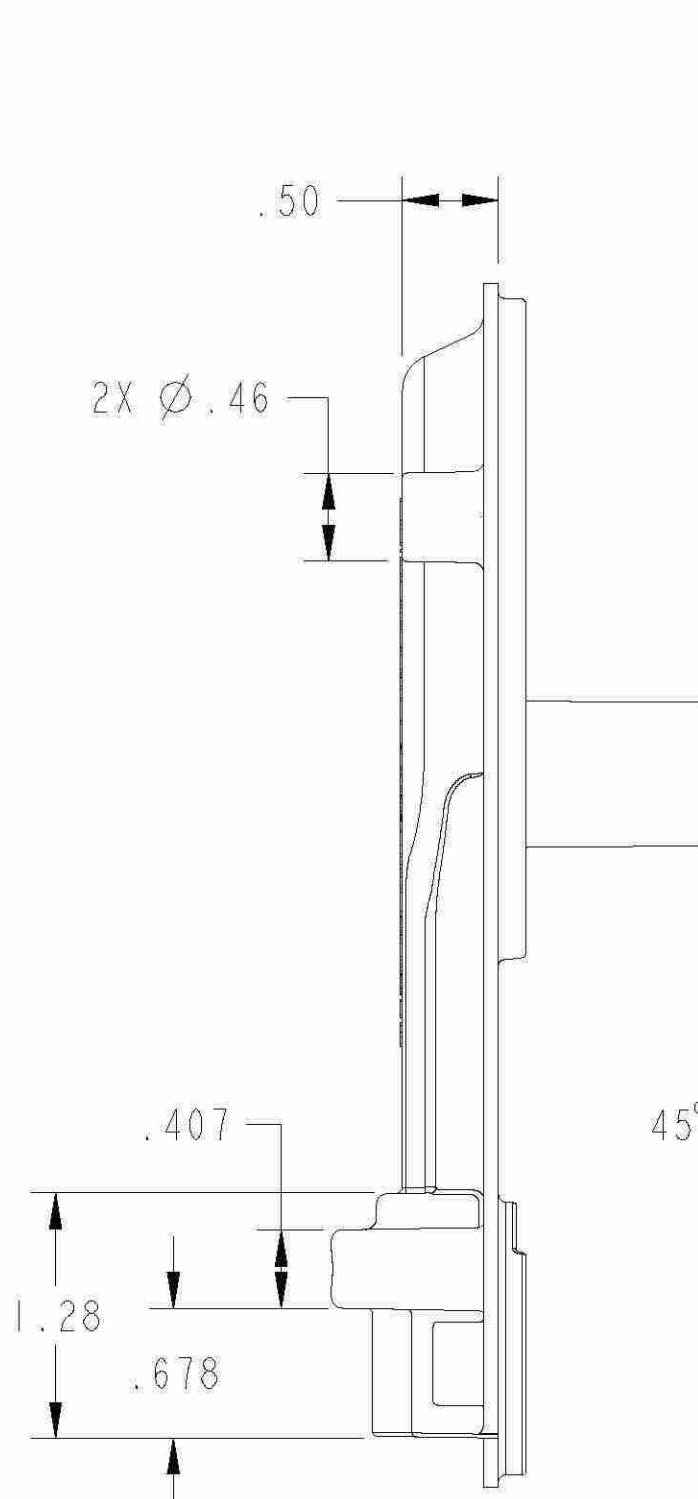
SECTION B-B



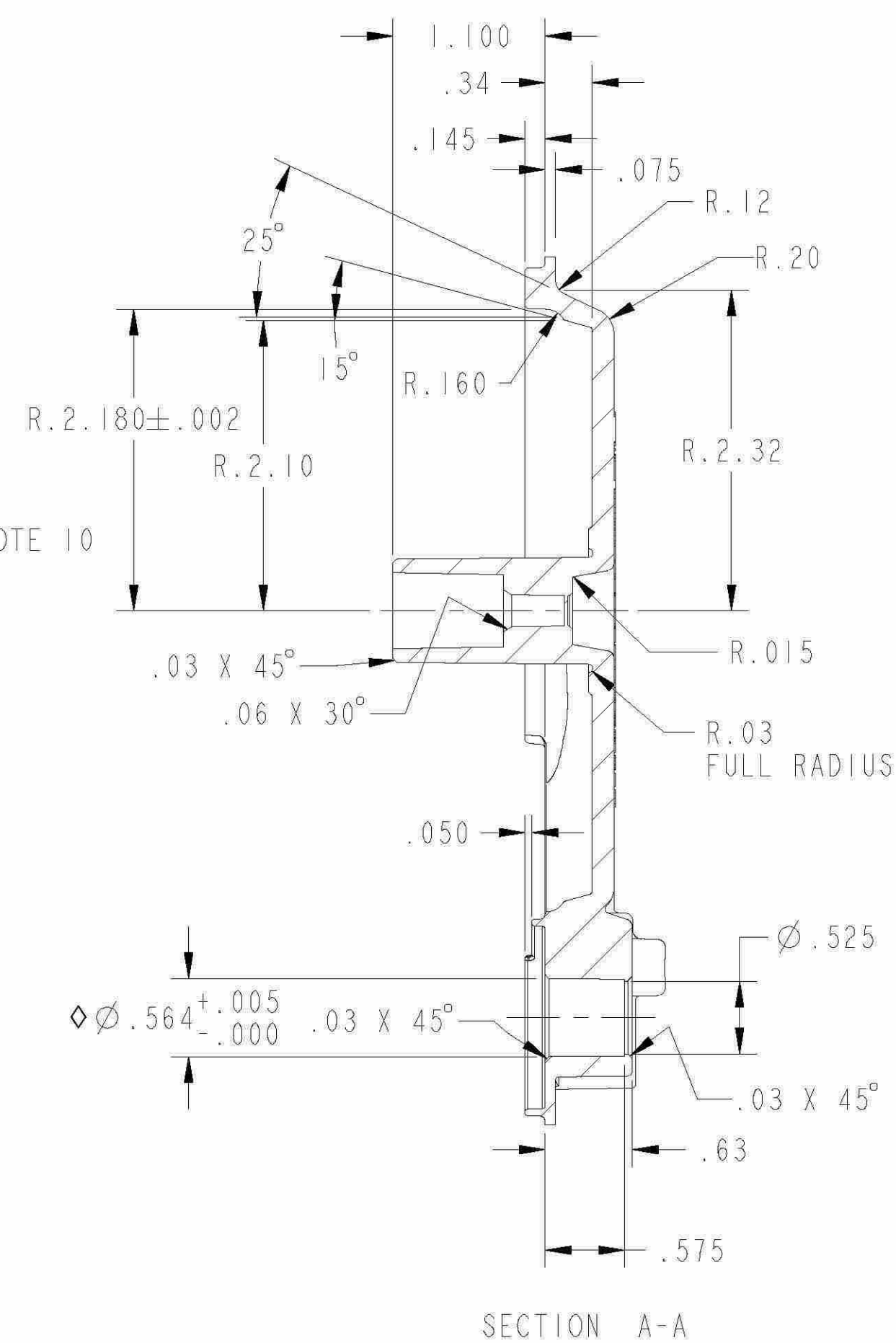
SECTION C-C



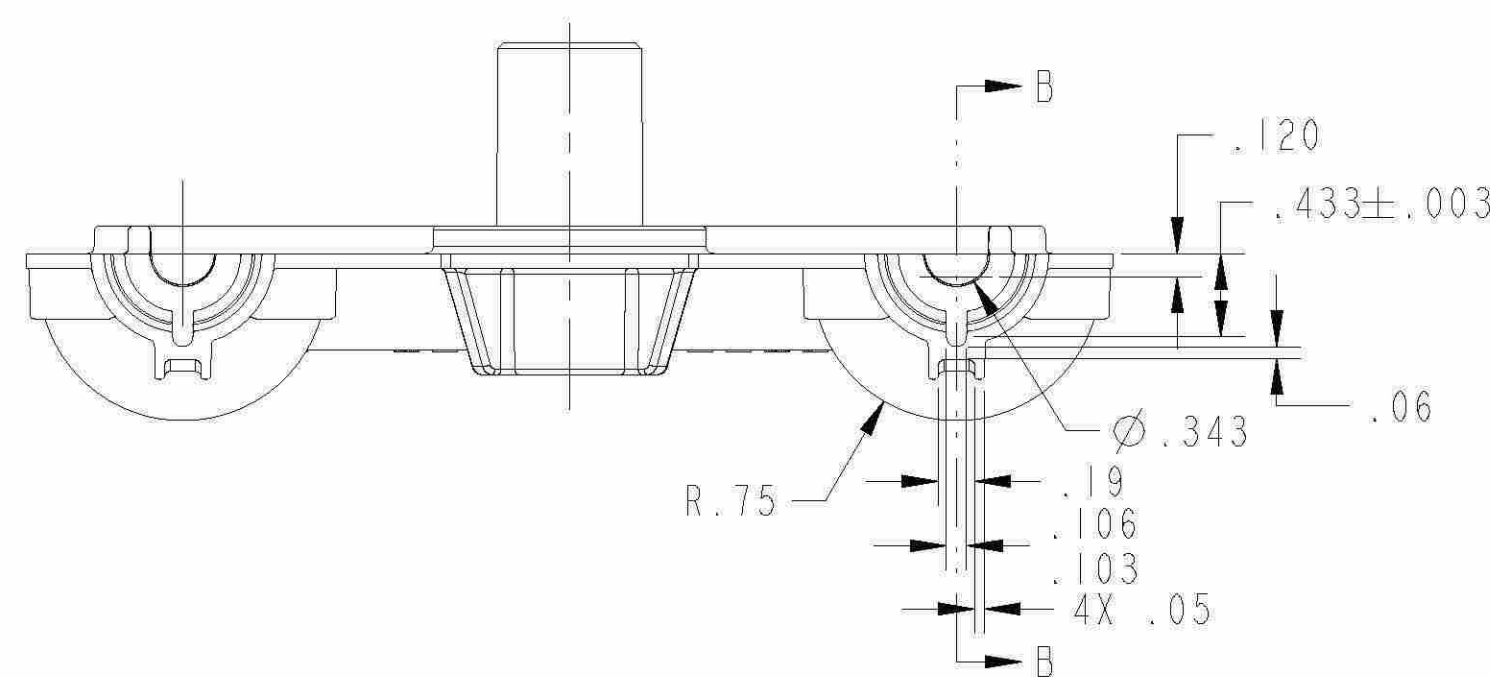
SECTION D-D
TYPICAL OF 2 PLACES



SEE NOTE 10



SECTION A-A



SECTION B-B

REVISIONS				
REV	DESCRIPTION	DATE	DRW/CHK	APP
A	PRELIMINARY RELEASE, REPLACES 3915517	15MAY12		-
B	ADDED SIG. SYMBOLS TO Ø.746, Ø.564, DIM 2.941, DIM .207 & DIM 2.016	04JUN12		-

7608010

SYMBOLS ∇ ◊ □ REF. SPEC DS026 UNLESS OTHERWISE SPECIFIED DIMENSIONS ARE IN INCHES TOLERANCES ARE TWO DECIMALS: ±.010 THREE DECIMALS: ±.005 ANGLES: ±1°	DESCRIPTION	DRAWING SIZE: D
	PROJECT	SCALE: 1.0 : 1.0
	LOWER HOUSING	SHEET 1 OF 1
	SAFE-T QC	DRAWN
		CHECKED
		APPROVED
		DRAWING NUMBER
		7608010